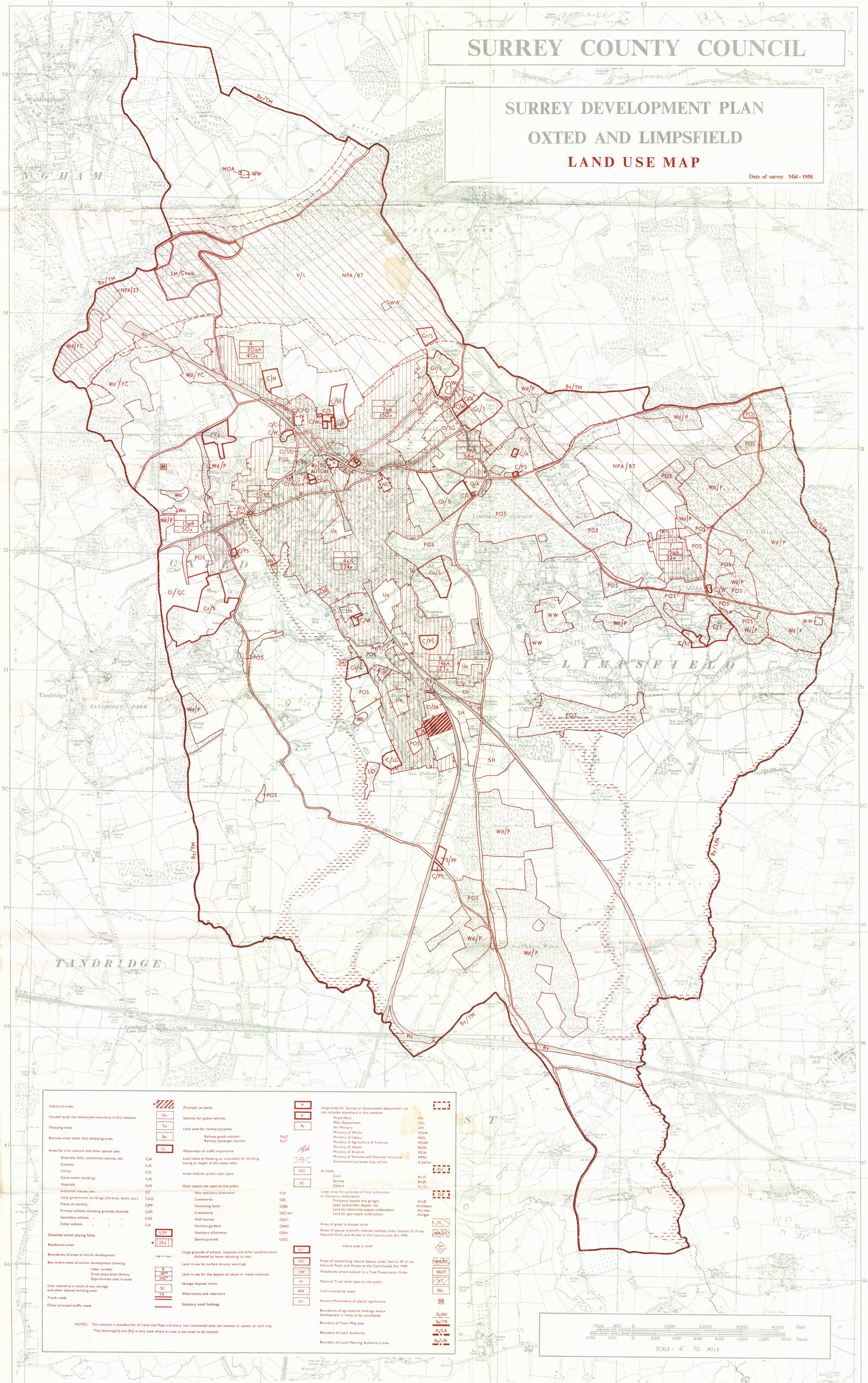


# SURREY COUNTY COUNCIL

## SURREY DEVELOPMENT PLAN OXTED AND LIMPSFIELD LAND USE MAP

Date of survey Mid-1958



	Industrial areas		Large areas for Service or Government department use not included elsewhere in this notation
	Unused lands not mentioned elsewhere in this notation		Royal Navy
	Shopping areas		War Departments
	Business areas other than shopping areas		Air Ministry
	Areas for civic cultural and other special uses		Ministry of Works
	Assembly halls, community centres, etc.		Ministry of Labour
	Cinemas		Ministry of Agriculture & Fisheries
	Government buildings		Ministry of Health
	Hospitals		Ministry of Aviation
	Institutes, homes, etc.		Ministry of Pensions and National Insurance
	Local government buildings (libraries, baths, etc.)		Government purposes (e.g. police)
	Places of worship		Airfields
	Primary schools including grounds attached		Civil Service
	Secondary schools		Army
	Other schools		Air Force
	Detached school playing fields		Air Corps
	Residential areas		Army Depot
	Boundaries of areas of similar development		Air Engine
	Box within areas of similar development showing index number		Air Landing
	Gross population density		Air Base
	Approximate area in acres		Air Depot
	Sites cleared as a result of war damage and other cleared building sites		Air Engine
	Trunk roads		Air Landing
	Other principal traffic roads		Air Base
	Principal car parks		Air Depot
	Stations for public vehicles		Air Engine
	Land used for railway purposes		Air Landing
	Railway goods outside		Air Base
	Railway passenger stations		Air Depot
	Waterways of traffic importance		Air Engine
	Land liable to flooding or unsuitable for building owing to height of the water table		Air Landing
	Area held for public open space		Air Base
	Open spaces not open to the public		Air Depot
	Non statutory allotments		Air Engine
	Comestibles		Air Landing
	Swimming baths		Air Base
	Crematoria		Air Depot
	Golf courses		Air Engine
	Nursery grounds		Air Landing
	Stationary allotments		Air Base
	Sports grounds		Air Depot
	Large grounds of schools, hospitals and other establishments (followed by letter denoting its use)		Air Engine
	Land in use for surface mineral workings		Air Landing
	Land in use for the deposit of refuse or waste materials		Air Base
	Sewage disposal works		Air Depot
	Waterworks and reservoirs		Air Engine
	Statutory small holdings		Air Landing
	Large areas for Service or Government department use not included elsewhere in this notation		Air Base
	Royal Navy		Air Depot
	War Departments		Air Engine
	Air Ministry		Air Landing
	Ministry of Works		Air Base
	Ministry of Labour		Air Depot
	Ministry of Agriculture & Fisheries		Air Engine
	Ministry of Health		Air Landing
	Ministry of Aviation		Air Base
	Ministry of Pensions and National Insurance		Air Depot
	Government purposes (e.g. police)		Air Engine
	Airfields		Air Landing
	Civil Service		Air Base
	Army		Air Depot
	Air Force		Air Engine
	Large areas for purposes of local authorities or statutory undertakers		Air Landing
	Transport depots and garages		Air Base
	Local authorities' depots, etc.		Air Depot
	Land for electricity supply undertakers		Air Engine
	Land for gas supply undertakers		Air Landing
	Areas of great landscape value		Air Base
	Areas of special scientific interest notified under Section 23 of the National Parks and Access to the Countryside Act 1949		Air Depot
	where area is small		Air Engine
	Areas of outstanding natural beauty under Section 87 of the National Parks and Access to the Countryside Act 1949		Air Landing
	Woodlands where subject to a Tree Preservation Order		Air Base
	National Trust lands open to the public		Air Depot
	Land covered by water		Air Engine
	Ancient Monuments of special significance		Air Landing
	Boundaries of agricultural holdings where development is likely to be considered		Air Base
	Boundary of Town Map area		Air Depot
	Boundary of Local Authority		Air Engine
	Boundary of Local Planning Authority's area		Air Landing

NOTES: This notation is standard for all Land Use Maps and every item mentioned does not necessarily appear on each map.  
\*The lettering [S] and [R] is only used where an area is too small to be hatched.

