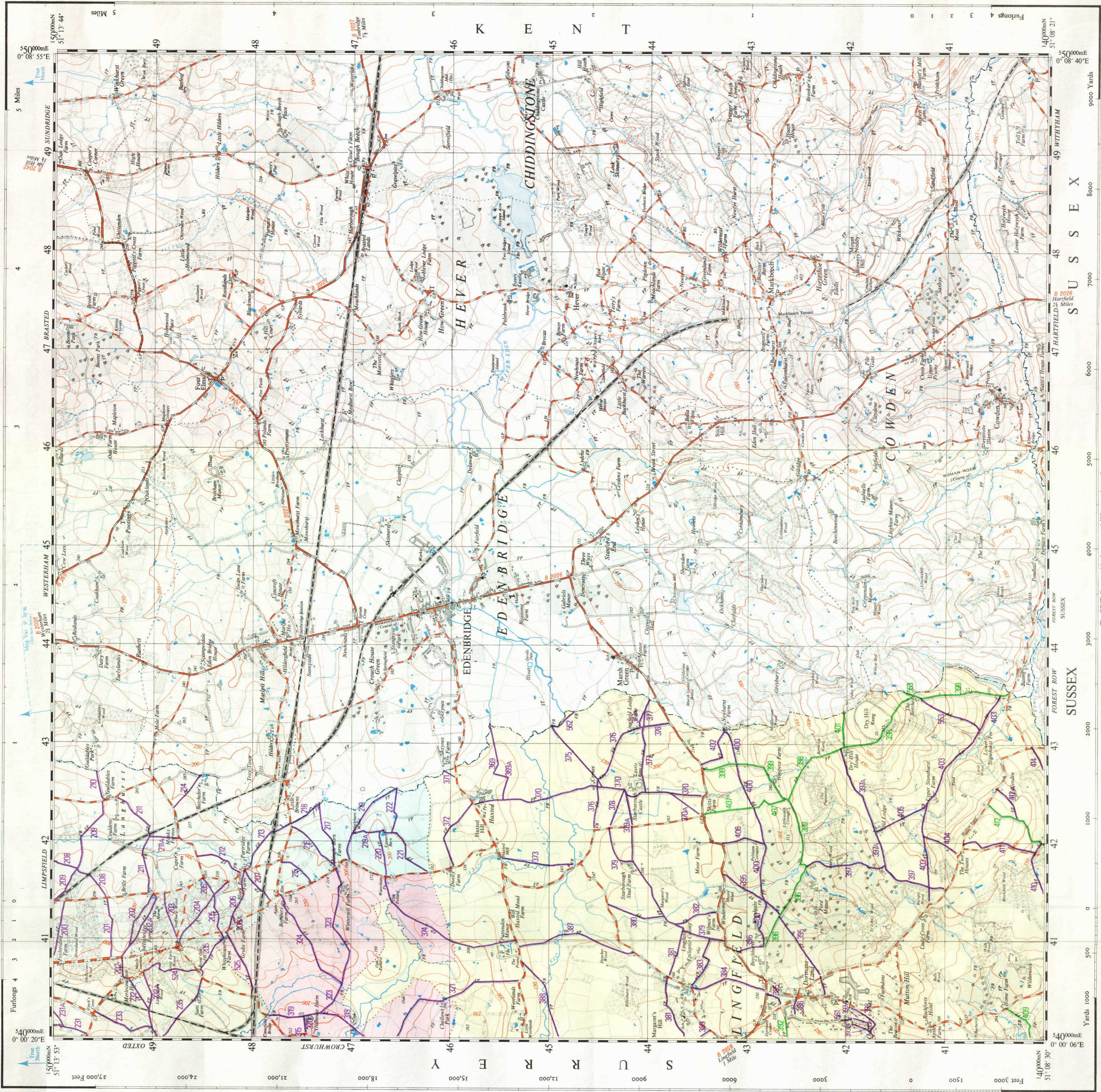


ORDNANCE SURVEY
Scale 1:25,000 or about 2½ inches to 1 Mile
Provisional Edition

SHEET TQ44

SHEET TQ44



SHEET TQ44

SHEET TQ44

Published by the Director-General of the Ordnance Survey, Southampton, 1957.

Compiled from 6" sheets last fully revised 1907-37. Systematic revision 1937-55 has been incorporated.

The grid lines on this sheet are at 1 kilometre intervals. Heights are in feet above Mean Sea Level or A.M.S.L.

To save space the reference tables of Contour and Signs are omitted. They are published separately.

Grid North at the centre of this sheet is 1° 37' 07" of True North. Magnetic Variation is 9° 30' W of Grid North for June 1957. Annual Change 8" E.

The representation on this map of a Road, Track, or Footpath is in evidence of the existence of a right of way.

INDEX TO ADJOINING SHEETS

1948	1949	1950	1951	1952	1953	1954	1955
1956	1957	1958	1959	1960	1961	1962	1963